



Chester

Land Size 10,516 sq.ft

Built-up Area 4,612 sq.ft

- 4+1 Bedrooms
- 6 Bathrooms
- 1 Living / 2 Family
- Dry & Wet Kitchen

D o u b l e S t o r e y B u n g a l o w

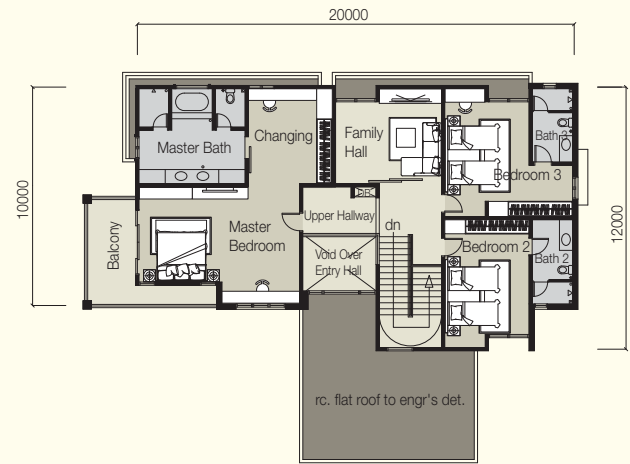


SPECIFICATIONS

Structure	: Reinforced concrete framework			
Brick	: Clay / kalsa brick			
Roof Tiles	: Cement roofing tiles Galvanised steel roof trusses			
Ceiling	: Ground floor internal area - Plaster glass ceiling / skim coat First floor internal area - Plaster glass ceiling All others external areas - Plaster glass ceiling / UAC asbestos / skim coat			
Windows	: Powder coated aluminium frame Top hung / fixed glass / sliding / casement window			
Doors	: Main entrance - Timber solid door All bedrooms & All bathrooms - Timber solid door / timber composite door - Aluminum sliding glass door / timber sliding door - Aluminium folding door			
Locks	: Quality lock set			
Floor Finishes	: Ground floor - Ceramic tiles First floor - Ceramic tiles All bathrooms - Ceramic tiles Balcony floor - Ceramic tiles Car porch / apron - Homogeneous tiles / cement render / concrete imprint All other areas - Cement render			
Wall Finishes	: All bathrooms - Ceiling height ceramic tiles Wet kitchen - Ceiling height ceramic tiles Other exposed wall - Cement plaster with quality emulsion paint / wallpaper			
Staircase Railing	: Tempered glass / wrought iron balustrade & timber handrail			
		Chester	Oxford	
Sanitary Fittings	: Bath tub	- 1	no	- 1 no
	Sink	- 3	nos	- 3 nos
	Bidet	- 6	nos	- 6 nos
	Sitting W. C.	- 6	nos	- 6 nos
	Wash hand basin	- 7	nos	- 7 nos
	Shower rose	- 5	nos	- 5 nos
	Washing machine tap	- 2	nos	- 2 nos
	Garden tap	- 4	nos	- 4 nos
Electrical Installation	: Lighting point	- 100	nos	- 94 nos
	Wall light point	- 71	nos	- 75 nos
	Spot lighting point	- 15	nos	- 13 nos
	13 amp socket point	- 62	nos	- 64 nos
	Telephone point	- 4	nos	- 4 nos
	Chandelier point	- 1	no	- 1 no
	Ceiling fan point c/w fan hook	- 9	nos	- 10 nos
	Chandelier ceiling fan point c/w fan hook	- 2	nos	- 2 nos
	Gate post lighting point	- 4	nos	- 4 nos
	Auto gate motor point	- 1	no	- 1 no
	TV point / Astro point	- 3	nos	- 3 nos
	Aircond point	- 7	nos	- 7 nos
	Booster pump point	- 1	no	- 1 no
	Solar water heater point	- 1	no	- 1 no
Paints	: External - Weather resistant paint Internal - Emulsion paint Timber & metal - Gloss paint			
Fencing	: 6' height brick wall			
Gate	: M.S. gate			
Other Features	: Solar water heater system	- 1 set		



Ground Floor Plan



First Floor Plan



Another Exclusive project by

Para Development Sdn. Bhd. (112378-T)

No. 12 & 14, Hala Taman Meru 11, Pusat Komersial Meru 2B,
30020 Jelapang, Ipoh, Perak, Malaysia.

Pemaju: Para Development Sdn Bhd (112378-T) • No. Pelan Kelulusan: MBI (07)05C(700-B)/L/B/5/355/972/12

www.para.com.my

05-528 2208

012-517 1982